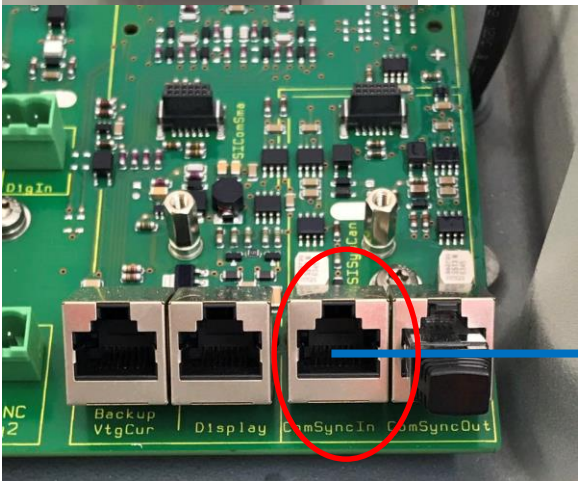


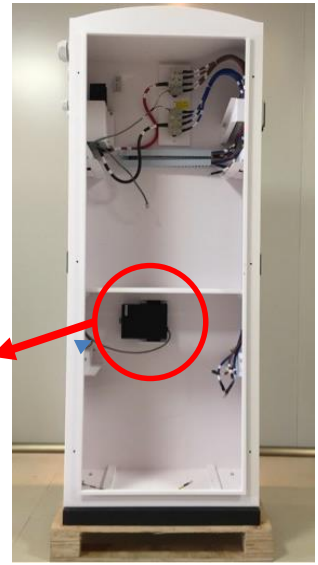
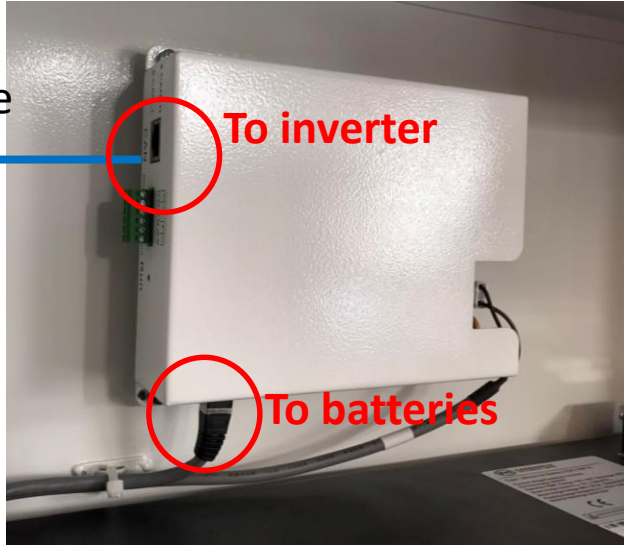
# B-Box with Sunny Island Commissioning



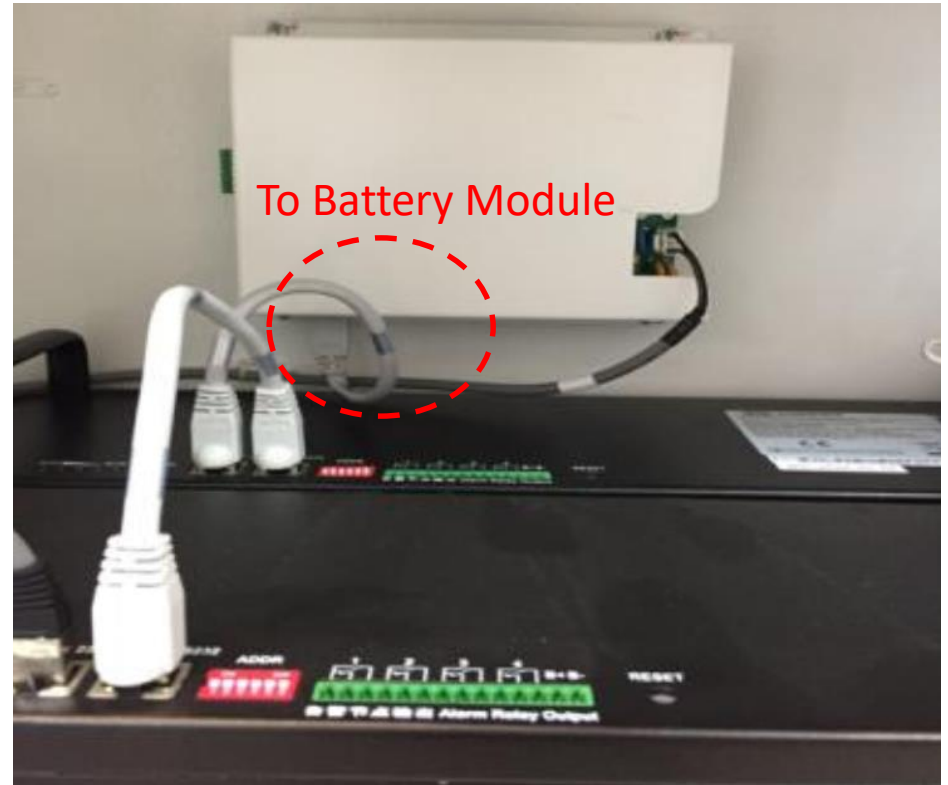
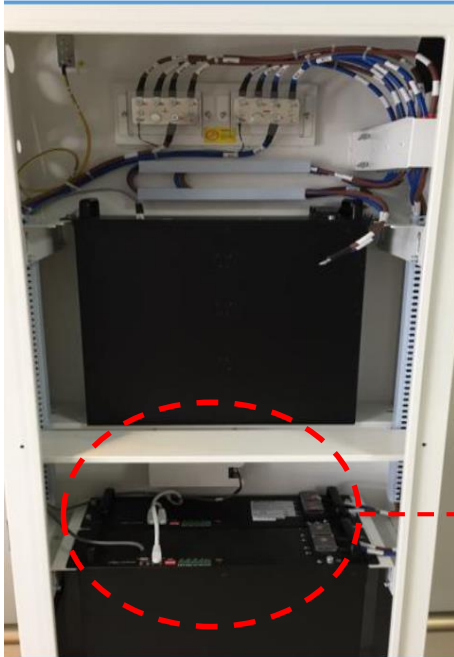
# Connecting B-Box BMU to Sunny Island



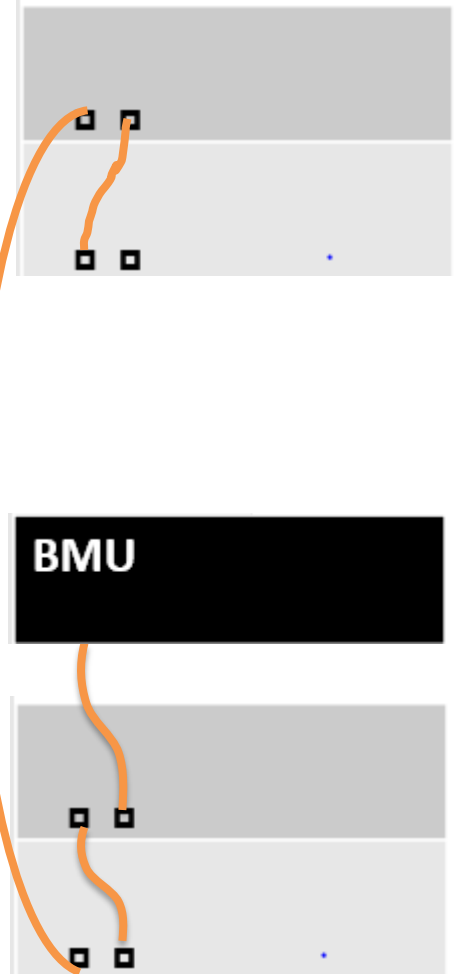
Standard network cable



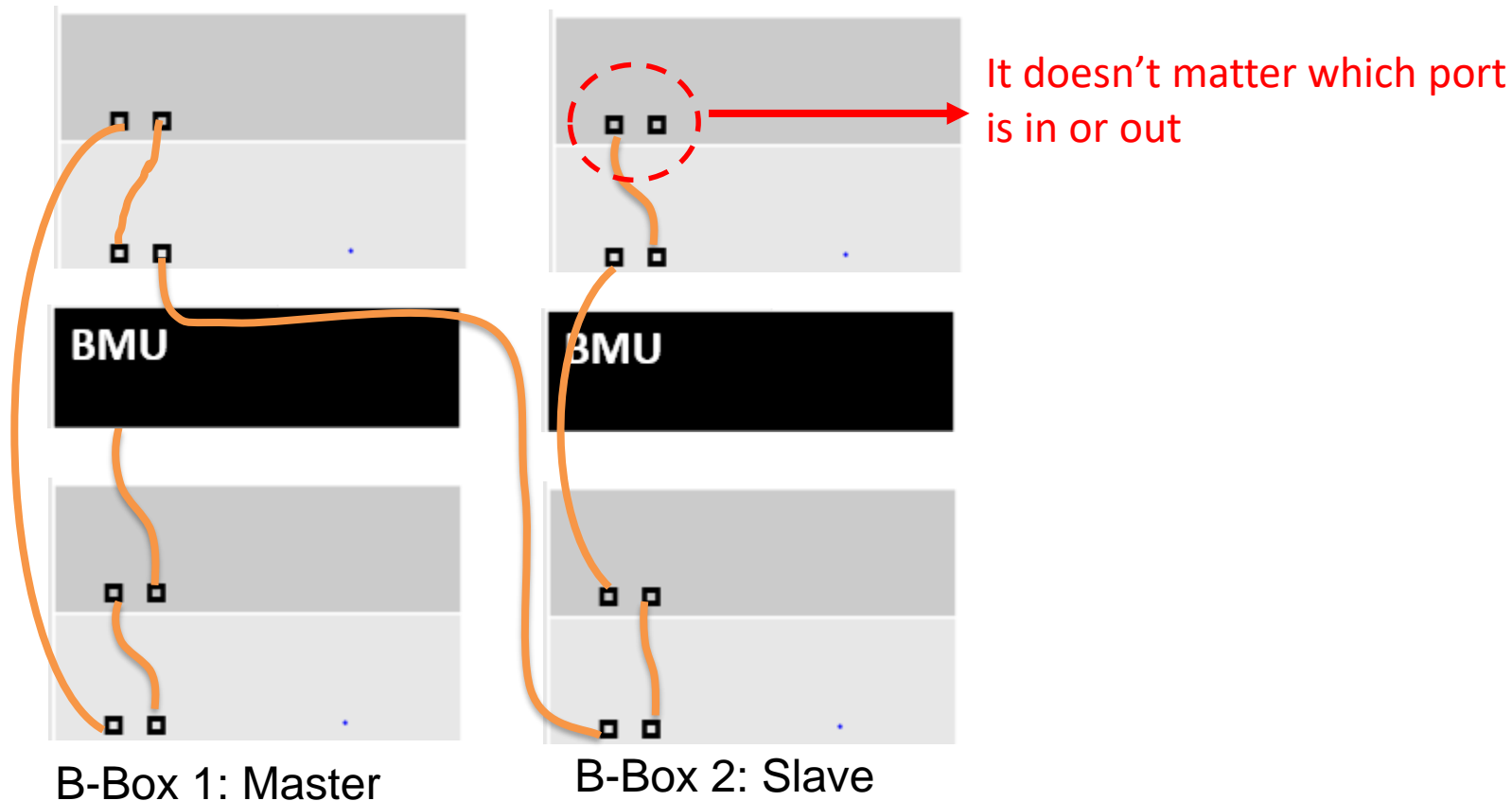
# Connecting B-Box BMU to Battery Modules



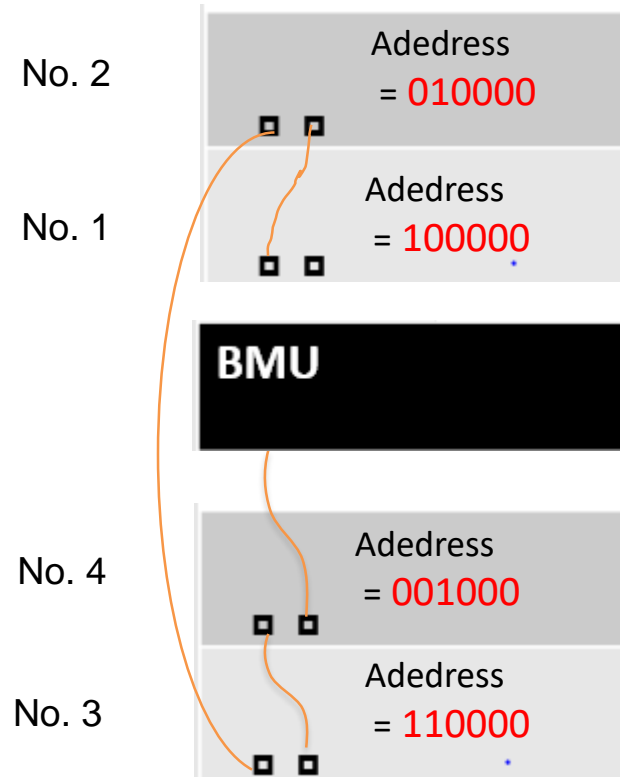
# Comms Cables Connection in One Cabinet



# Comms Cables Connection for Master & Slave B-Box

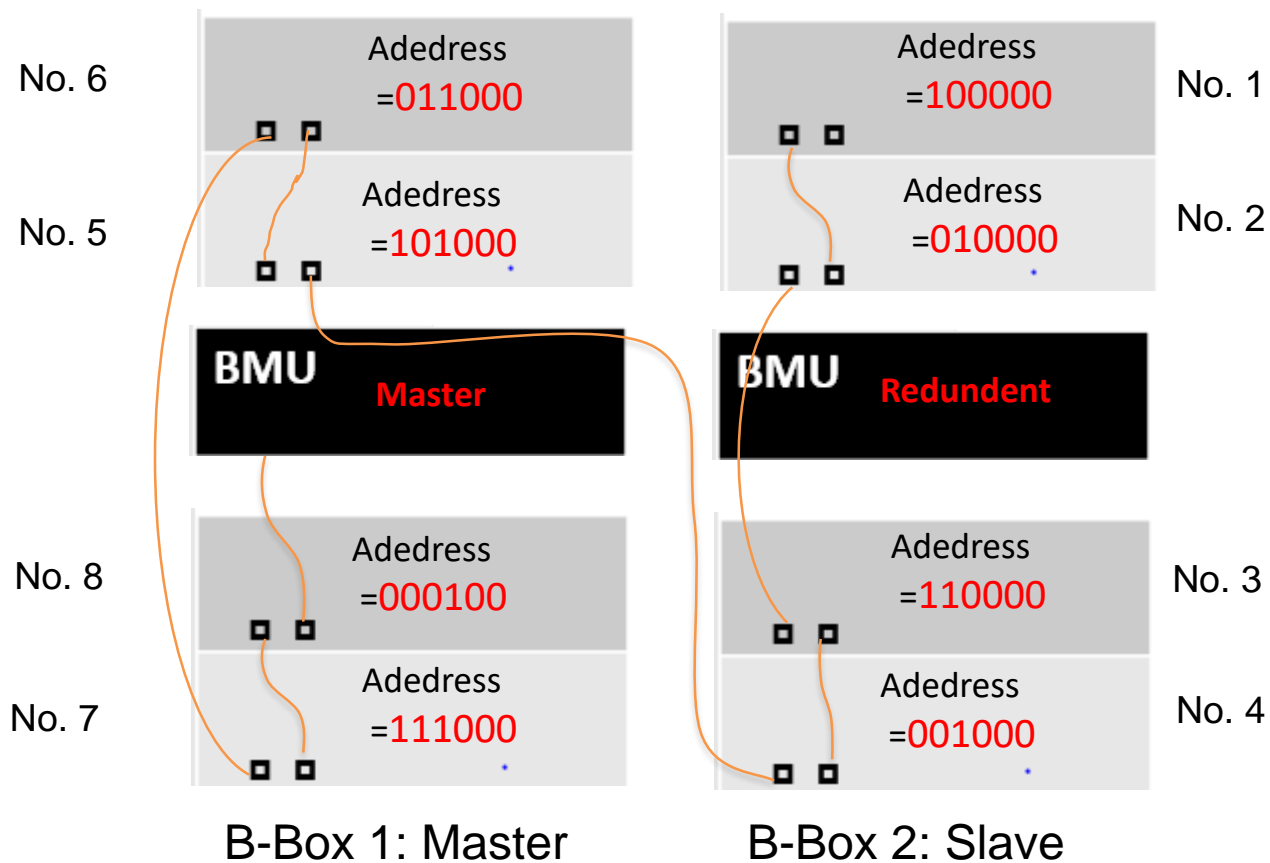


# Address Setup for 1 Cabinet

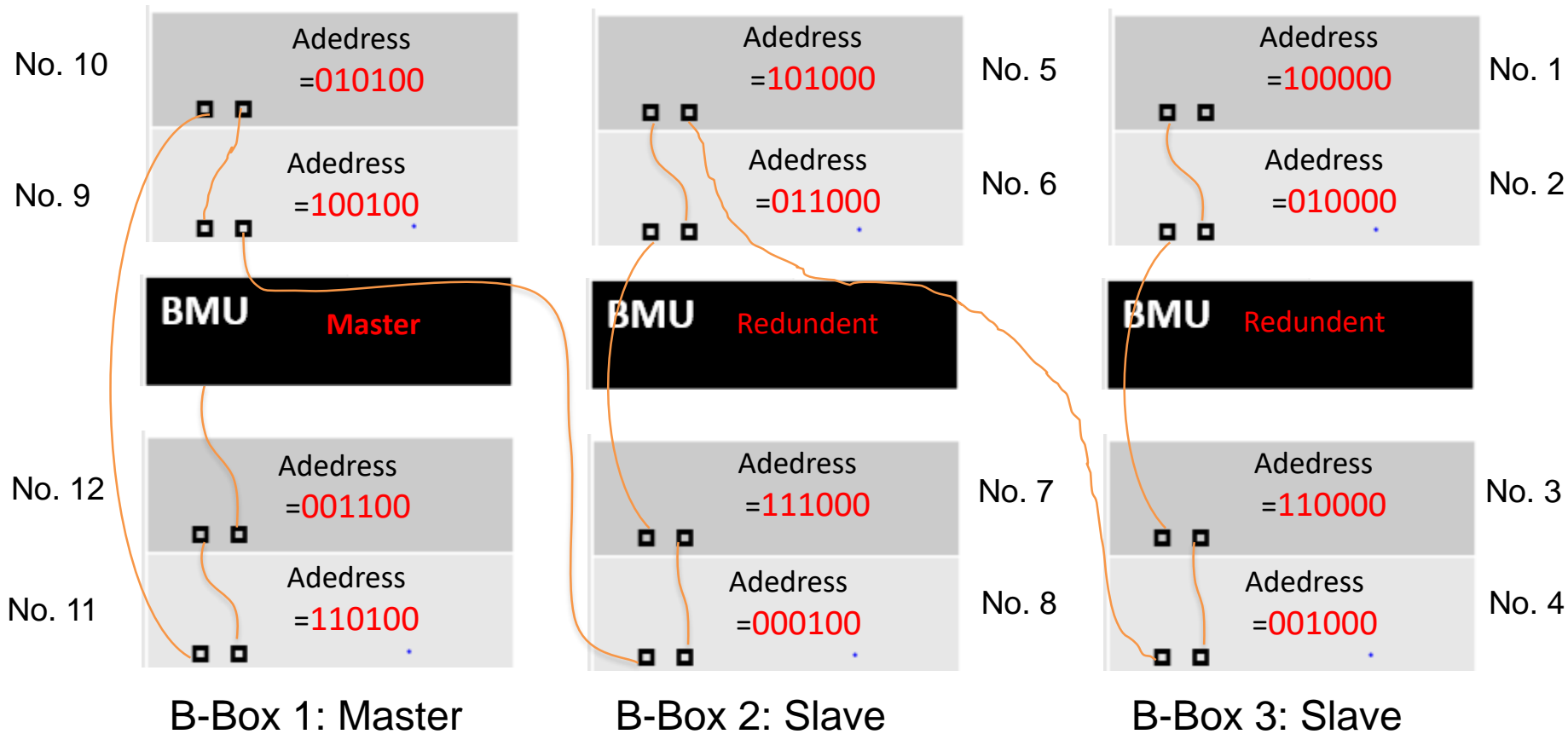


B-Box 1: Master

# Address Setup for 2 Cabinets



# Address Setup for 3 Cabinets





# Battery protection SOC setup for Sunny Island v12 (WIFI version)

Connect to SUNNY ISLAND's WIFI with your computer or cellphone

Connection URL **192.168.12.3**

## Battery - Protection mode

**v12 (WIFI version)**

Limit of battery state of charge [A]	<input type="text" value="12.0"/>	%	<b>i</b>
Limit of battery state of charge [B]	<input type="text" value="12.0"/>	%	<b>i</b>
Limit of battery state of charge [C]	<input type="text" value="3.0"/>	%	<b>i</b>

> Generator

▼ Generator queries state of charge

Switch-on limit in time range	<input type="text" value="17"/>	%	<b>i</b>
Switch-off limit in time range	<input type="text" value="35"/>	%	<b>i</b>

# Battery protection SOC setup for Sunny Island v11 (No WiFi)

## Charging the battery Usage through battery backup system without increased self-consumption

Parameters	Setup value	
003.07Batt Typ	Li Lon_Ext-BMS	
003.10Batt Cpynom	50	Battery capacity nominated = 50Ah * battery numbers
262.01ProtResSOC	3	e.g. For 4PCS batteries = 50Ah*4 = 200Ah
262.02BatResSOC	10	

## Parameter setup for B-BOX in off-grid

### Protection for the Battery

Parameters	Recommended Value
223.05 BatPro1Soc	12%
223.06 BatPro2Soc	12%
223.07 BatPro3Soc	3%

**v11 (No WiFi)**

### Gen Autostart Control

Parameters	Recommended Value
235.03 GnSocTm1Str	17%
235.04 GnSocTm1Stp	35%