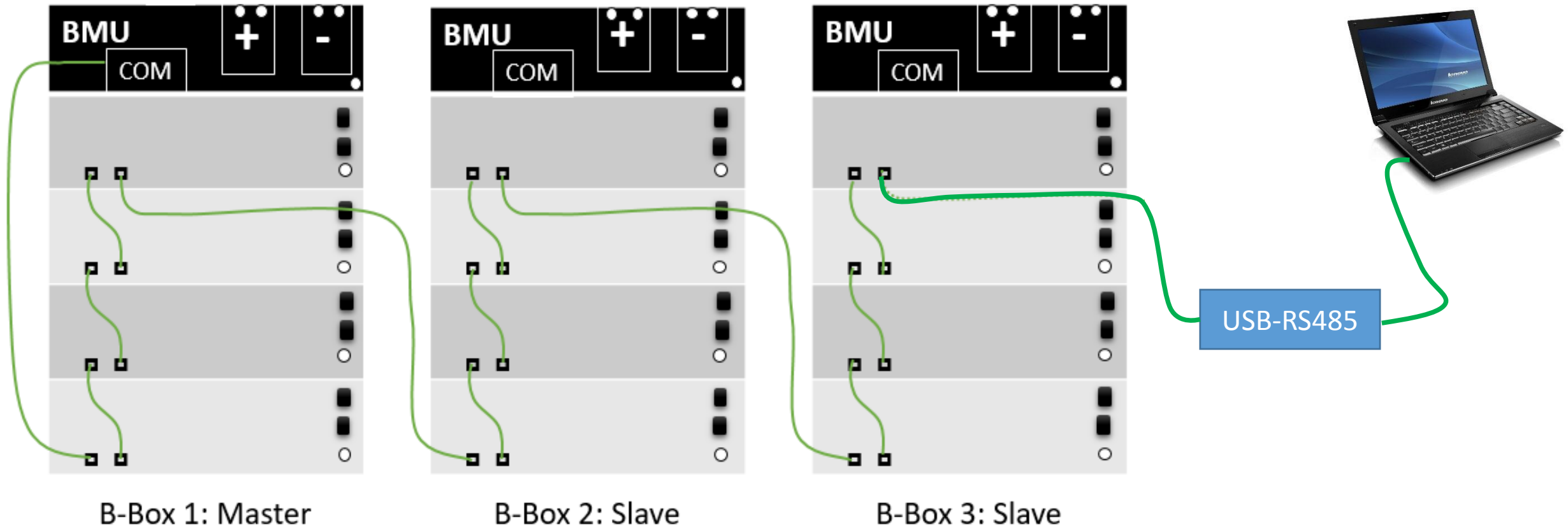


# Check Communication Manuel

Vic.zhang

2017.6.30

1. Connect Computer with the last BMS by **USB-RS485** .







## 2. Turn on the inverter

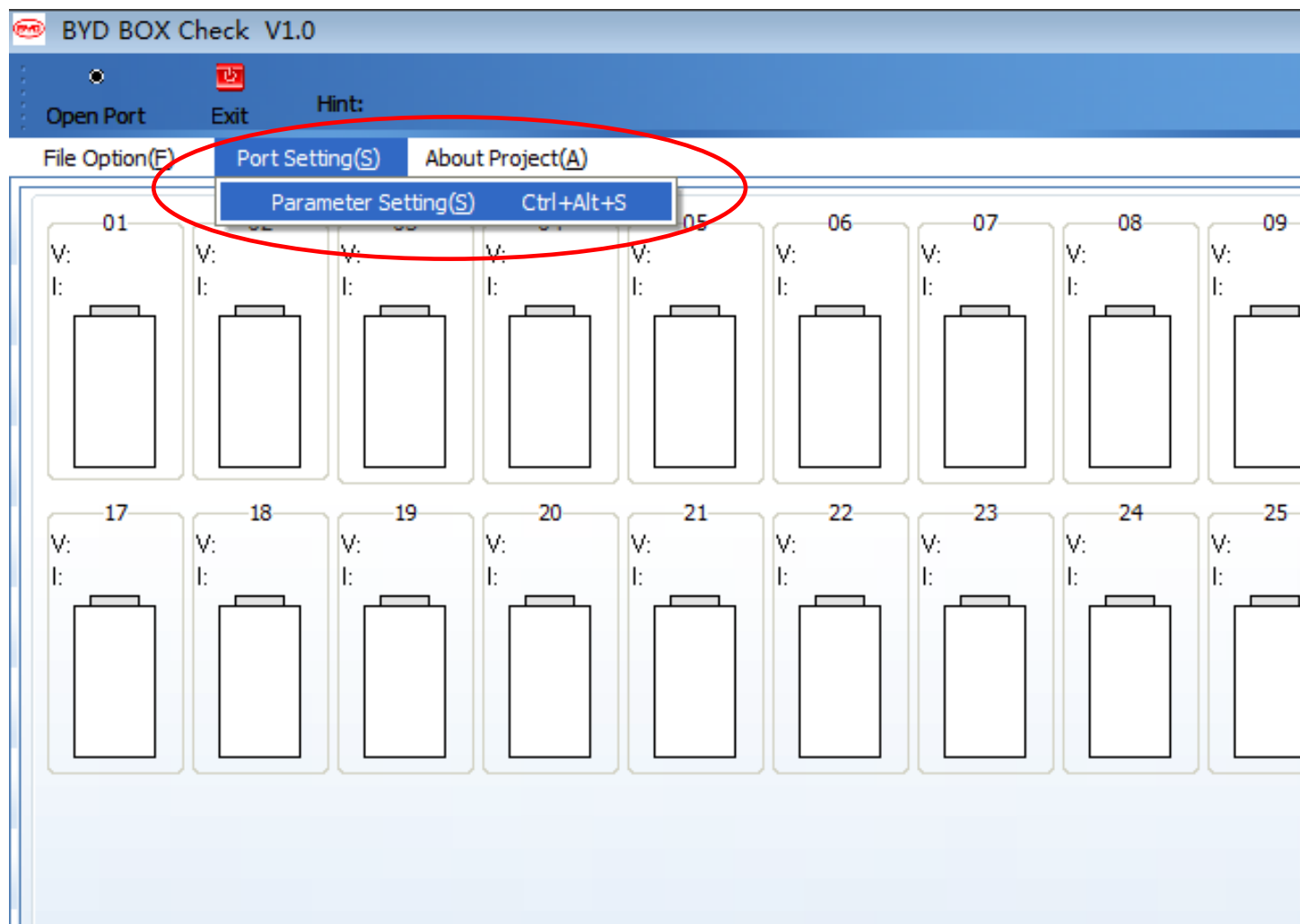


• • • • •

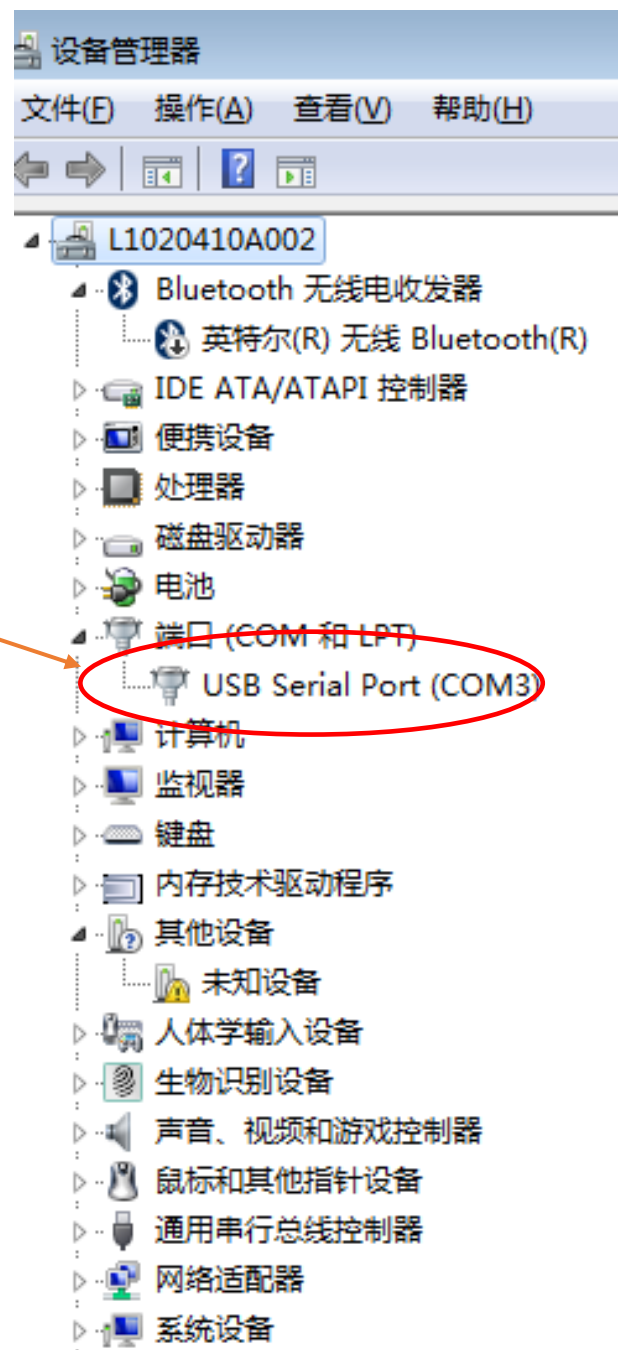
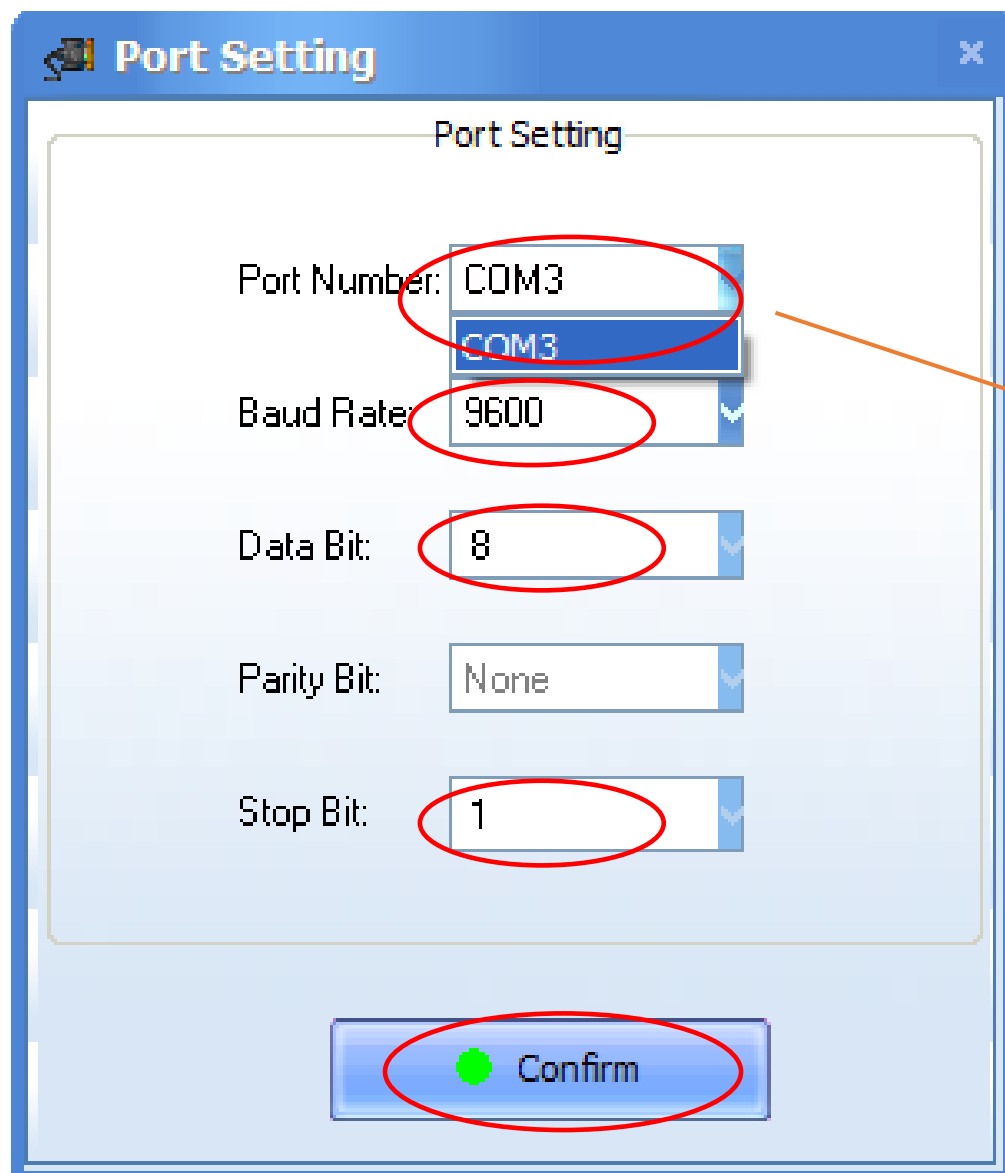
### 3. Open the software.

名称	修改日期	类型	大小
ADC	2017/6/28 11:20	文件夹	
Alarm_Data	2017/6/28 11:20	文件夹	
AutoTSBS_Data	2017/6/28 11:20	文件夹	
BMS	2017/6/28 11:20	文件夹	
Data	2017/6/28 11:20	文件夹	
Info	2017/6/28 11:21	文件夹	
KB	2017/6/28 11:20	文件夹	
res	2017/6/28 11:21	文件夹	
SerialData	2017/6/28 11:20	文件夹	
 BYD BOX Check V1.0.exe	2017/6/28 13:23	应用程序	4,275 KB
 ParaRecord.dat	2017/6/28 11:21	DAT 文件	1 KB
 ParaSeting.ini	2017/6/28 11:21	配置设置	3 KB
 Version.dat	2017/6/28 11:20	DAT 文件	0 KB

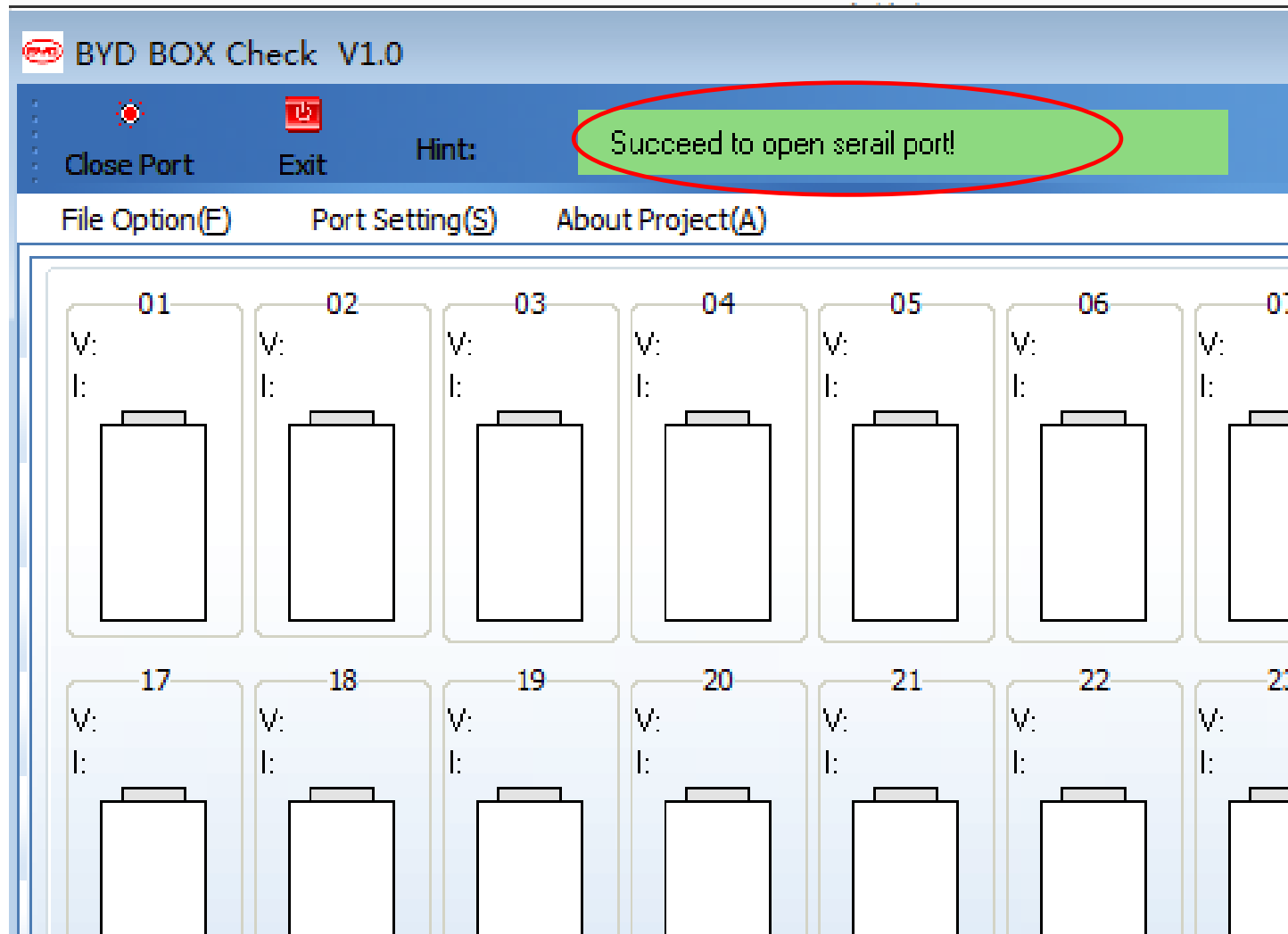
## 4. Port settings.



## 4. Set the port.



## 5. Succeed to open port.



## 6. You can see all the battery.

