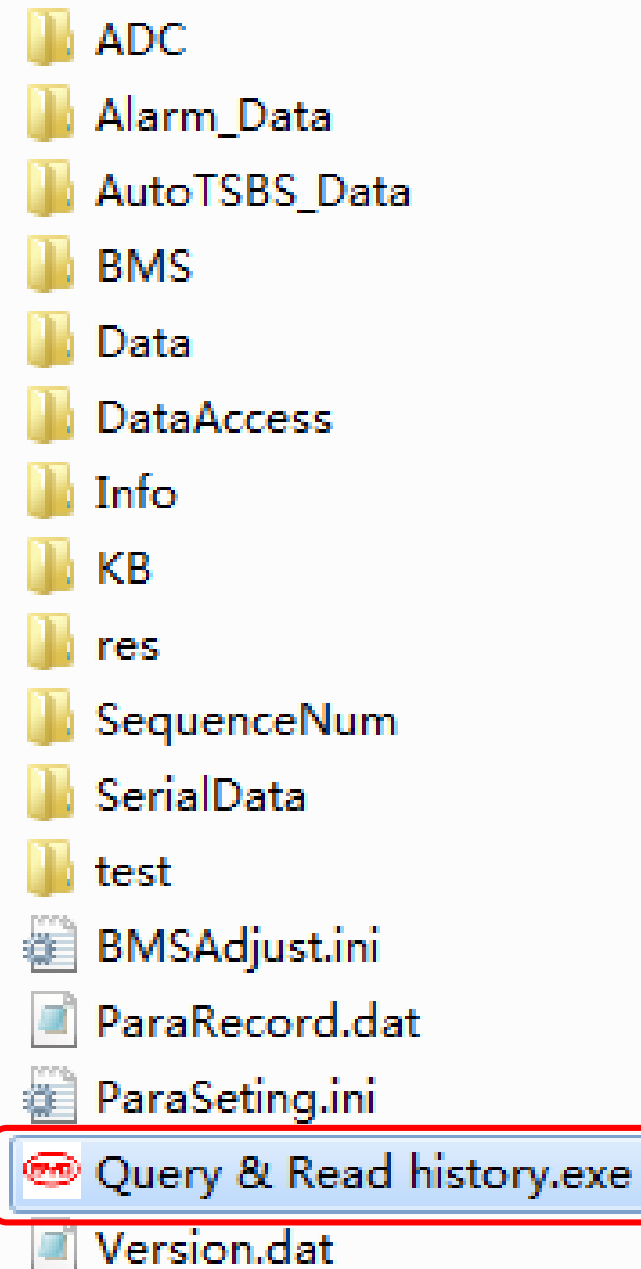


Query & Read history information

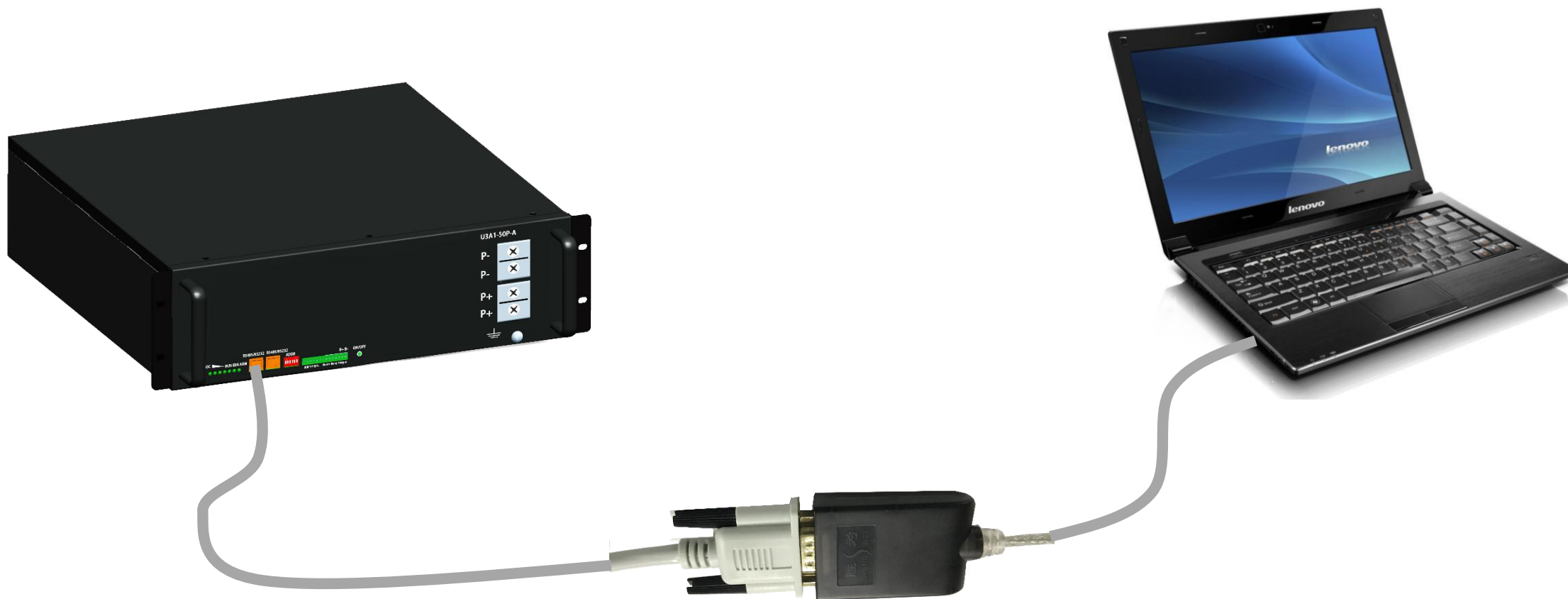
Vic.zhang

2017.07.05

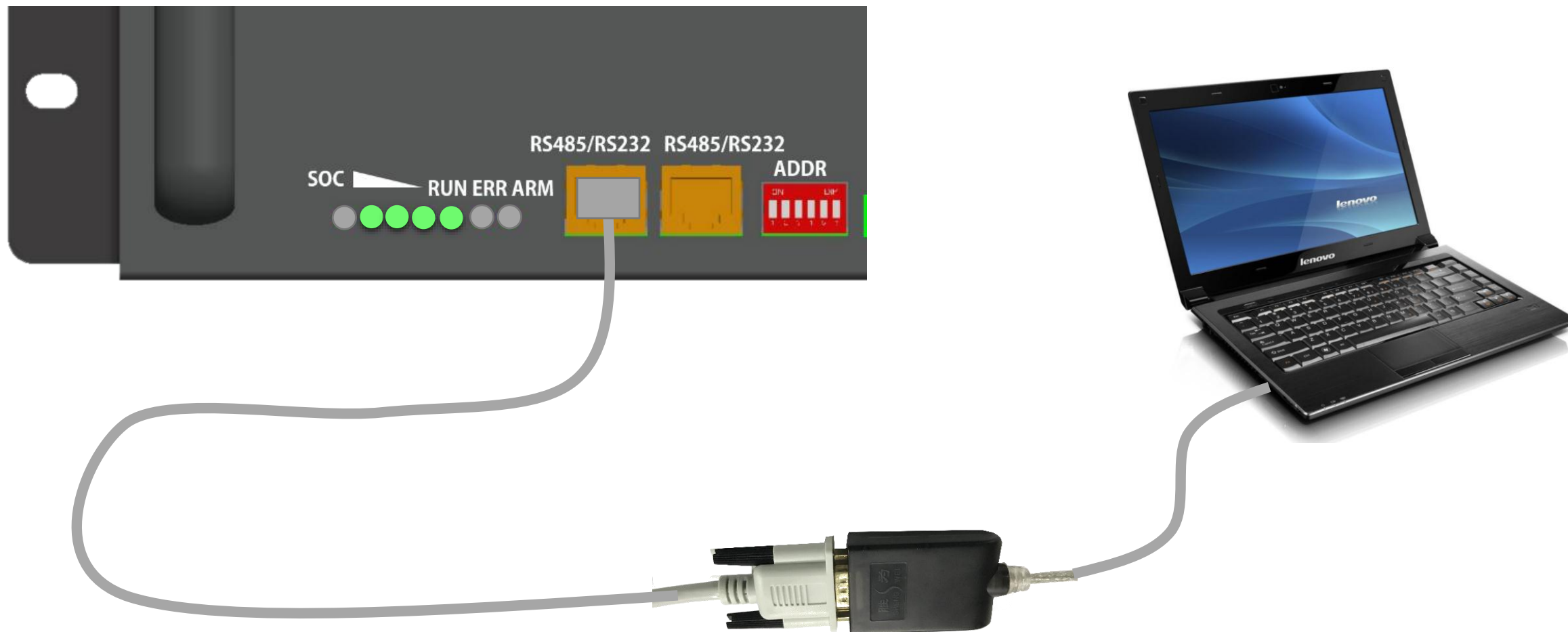
1.Open the software



2. Connect the computer with battery by the USB-485 cable.



3. Power on the battery .



4.Choose the COM.

BYD BMS Software V1.0.7

Open Port Login Module Load Data Save Data Hint:

File Option(F) Port Setting(S) Version Exchange(E) About

TSBS Query Au

Parameter Setting(S) Ctrl+Alt+S

PACK	VOLT		mV	CELL [1]	TEM
BATT	VOLT		mV	CELL [2]	TEM
CELL [1]	VOLT		mV	CELL [3]	TEM
CELL [2]	VOLT		mV	CELL [4]	TEM
CELL [3]	VOLT		mV	CELL [5]	TEM

Port Setting

Port Number: COM3

Baud Rate: 9600

Data Bit: 8

Parity Bit: None

Stop Bit: 1

Confirm

磁盘驱动器

电池

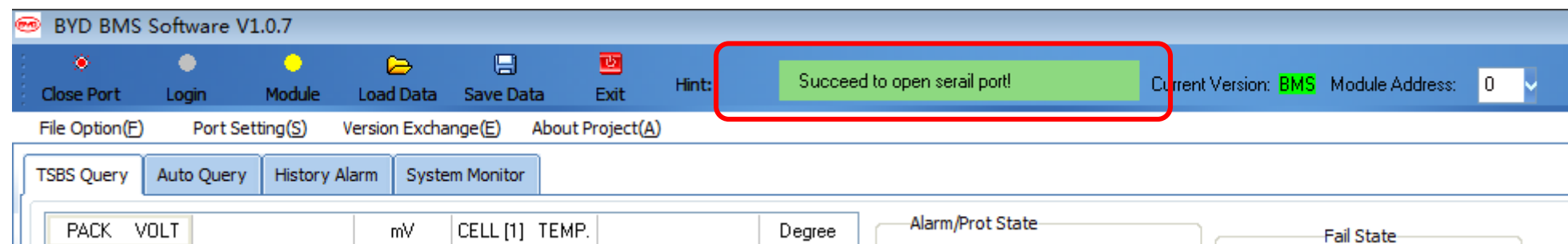
端口 (COM 和 LPT)

USB Serial Port (COM3)

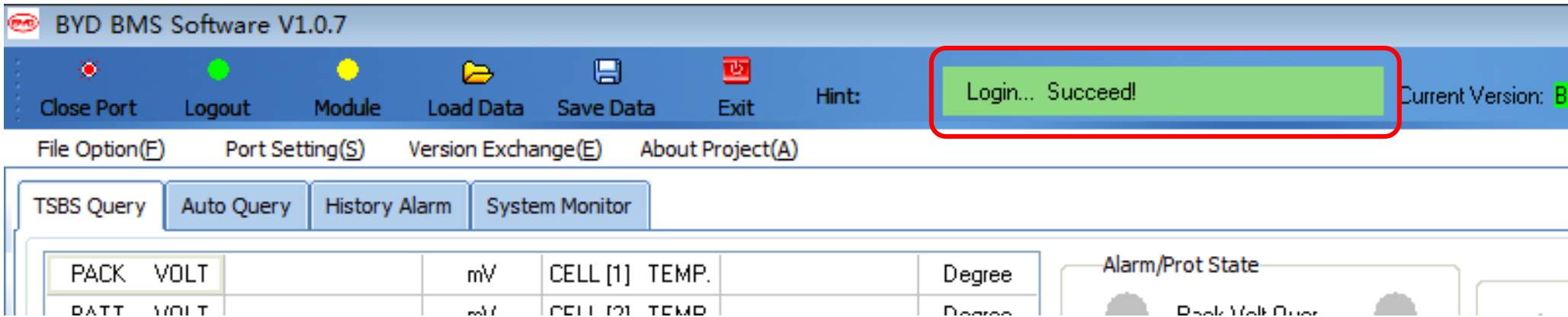
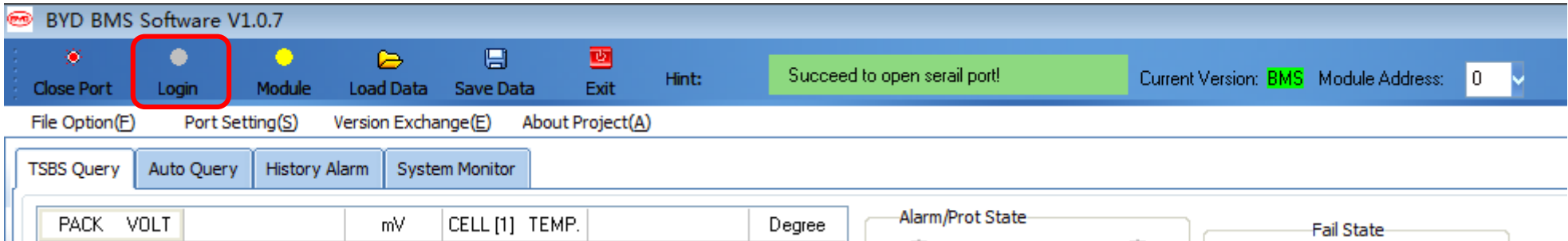
计算机

监视器

5.Succeed to open serial port.



6.Login.



7.Query once (click the **EXECUTE**)

BYD BMS Software V1.0.7

Close Port

Logout

Module

Load Data

Save Data

Exit

Hint: Query SBS data... Succeed!

Current Version: BMS

Module Address: 0

File Option(F)Port Setting(S)Version Exchange(E)About Project(A)

TSBS QueryAuto QueryHistory AlarmSystem Monitor

PACK	VOLT	53458	mV	CELL [1]	TEMP.	27	Degree
BATT	VOLT	53295	mV	CELL [2]	TEMP.	27	Degree
CELL [1]	VOLT	3328	mV	CELL [3]	TEMP.	27	Degree
CELL [2]	VOLT	3332	mV	CELL [4]	TEMP.	27	Degree
CELL [3]	VOLT	3331	mV	CELL [5]	TEMP.	25	Degree
CELL [4]	VOLT	3332	mV	CELL [6]	TEMP.	0	Degree
CELL [5]	VOLT	3331	mV	CELL [7]	TEMP.	0	Degree
CELL [6]	VOLT	3332	mV	CELL [8]	TEMP.	0	Degree
CELL [7]	VOLT	3331	mV	OTHERS		12	
CELL [8]	VOLT	3331	mV	ALARM	STATE	0	
CELL [9]	VOLT	3331	mV	PROTECT	STATE	0	
CELL [10]	VOLT	3330	mV	FAIL	STATE	0	
CELL [11]	VOLT	3333	mV	3BALANCE	STATE	0	
CELL [12]	VOLT	3332	mV	3ATTERY	STATE	0	
CELL [13]	VOLT	3332	mV	SOC		99	%
CELL [14]	VOLT	3332	mV	SOC.HEALTH		100	%
CELL [15]	VOLT	3331	mV	DISCHG.TIMES		2	Times
CELL [16]	VOLT	3326	mV	DTLE DISCHG.SC		136	AH
CURRENT		0	mA	RECORD	TIME	2017-07-05 11:27:07	

Query Once:

Execute

Automatic Query:

Period Setting: 1

S

Execute

Meaning Of Color For Runing State Of Battery:

BYD

Charge:

Discharge:

Full:

Idle:

Alarm:

Prot/Fail:

Comm Fail:

Alarm/Prot State

Pack Volt Over

 Module Volt Over

 Cell Volt Over

 Module Volt Low

Fail State

 Volt.Sensor Fail

Others

Heater

Full.Count

Volt.Cal

Cur.Cal

Chg.Cur

Battery State

Charge

Discharge

Full





Idle

8. Setting period.(10 means query one time every 10 seconds), tick **Execute**

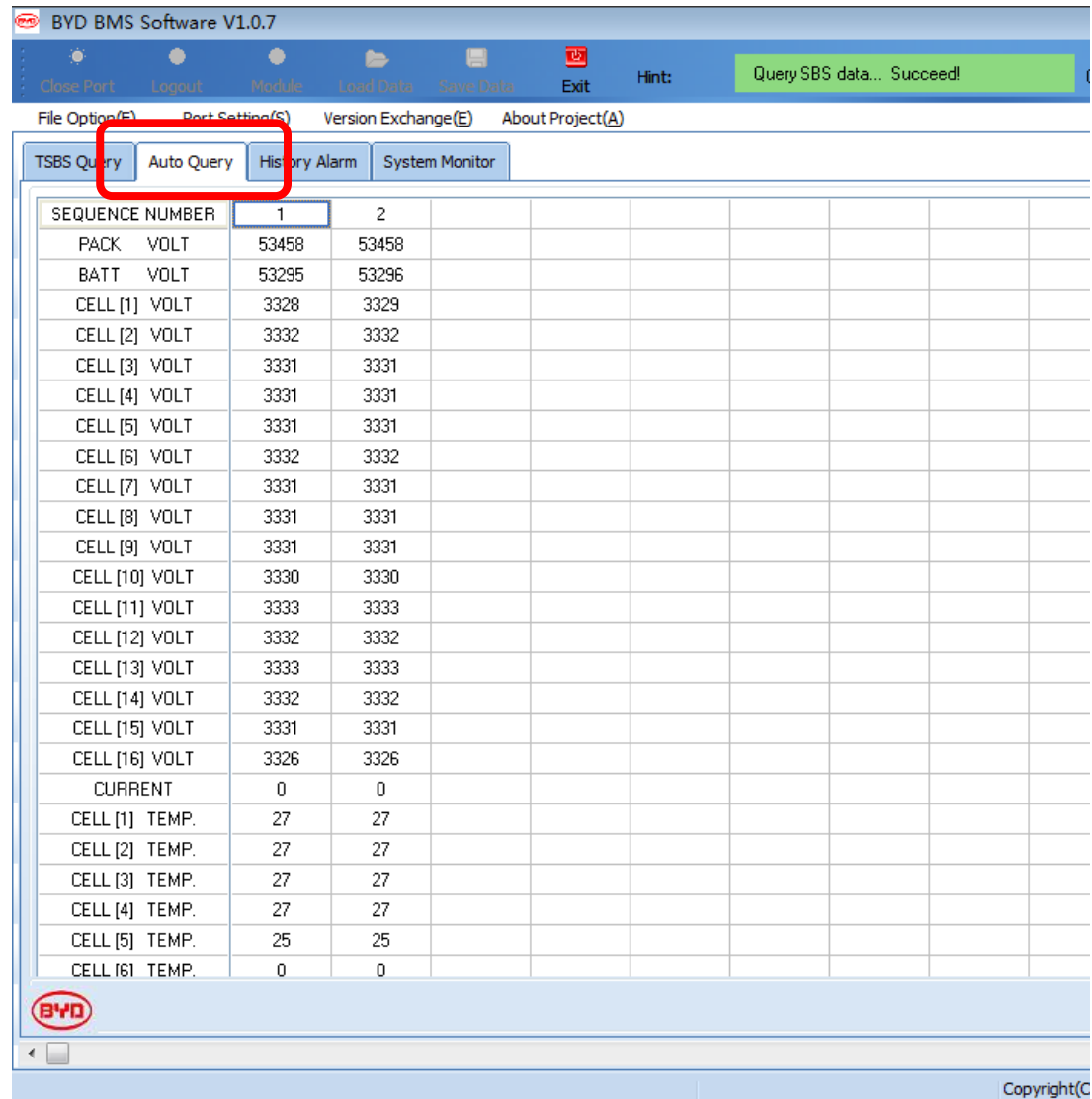
Query Once:

Automatic Query: ☒

Meaning Of Color For Runing State Of Battery:

 Charge:  Discharge:  Full: 

9. Click the **Auto Query**, you can see the information every 10 seconds.

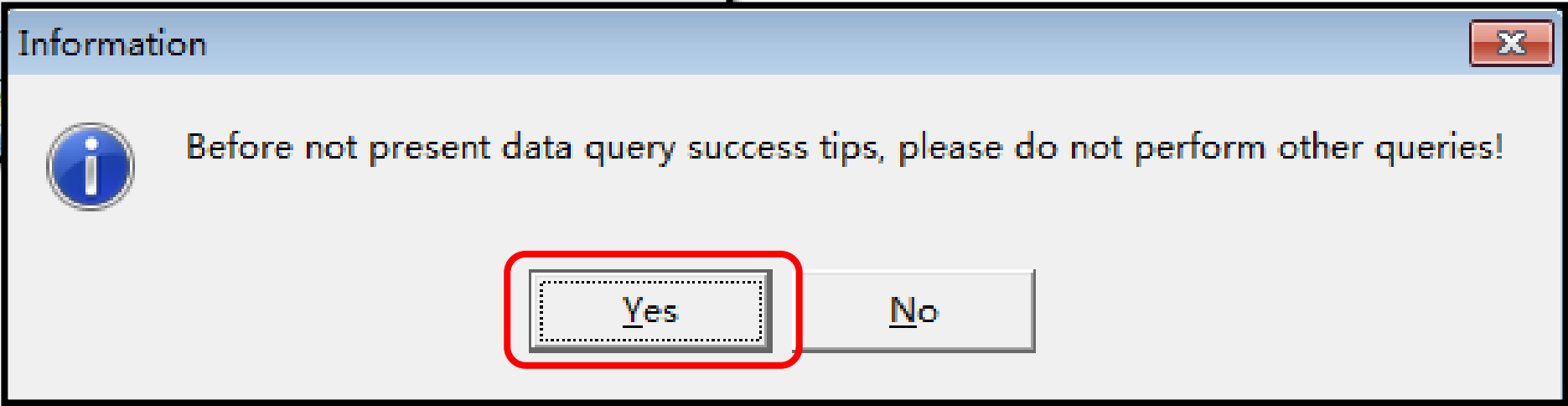
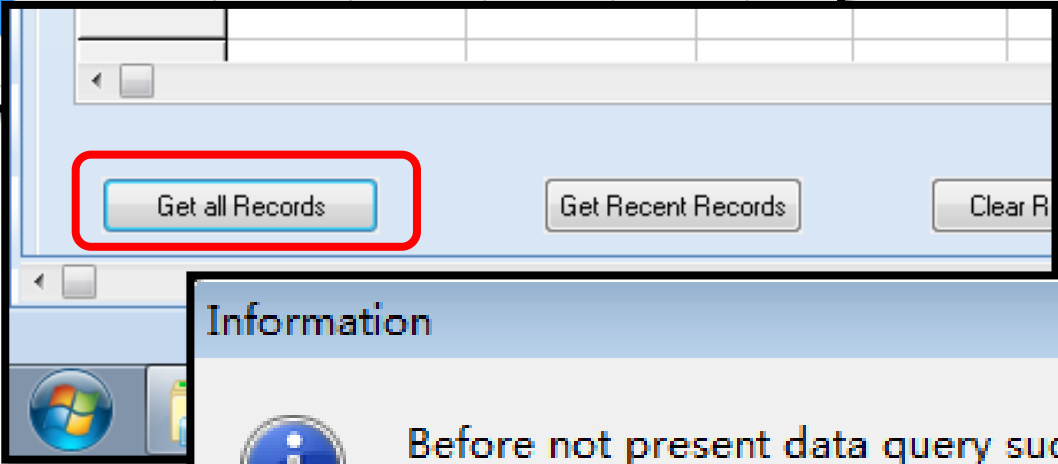
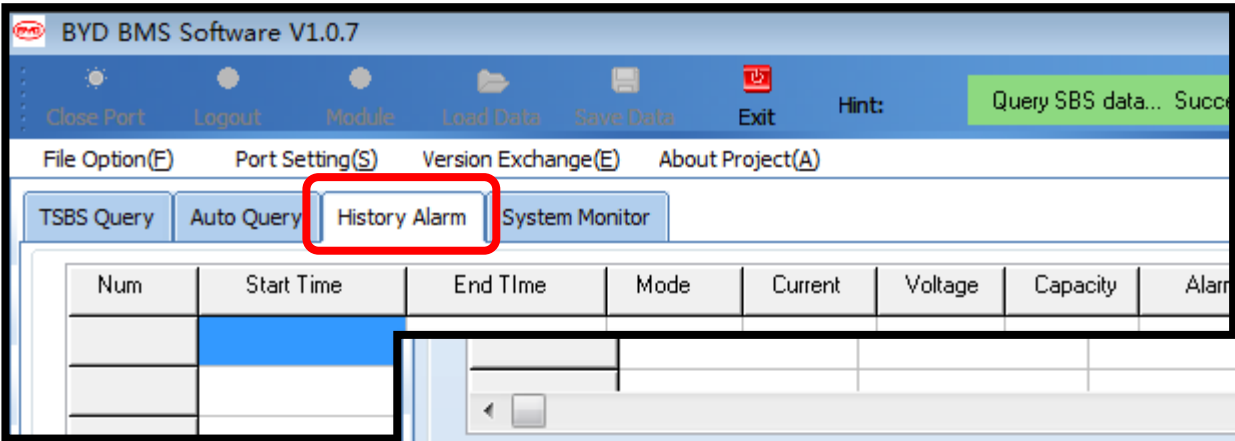


The screenshot shows the BYD BMS Software V1.0.7 interface. The top menu bar includes options like Close Port, Logout, Module, Load Data, Save Data, Exit, and Hint. A green status bar at the top right indicates "Query SBS data... Succeed!". Below the menu bar, there are tabs for File Option(F), Port Setting(S), Version Exchange(E), and About Project(A). The main window has a tabbed interface with "TSBS Query", "Auto Query", "History Alarm", and "System Monitor". The "Auto Query" tab is selected and highlighted with a red box. The main display area shows a table of battery status data.

SEQUENCE NUMBER	1	2							
PACK VOLT	53458	53458							
BATT VOLT	53295	53296							
CELL [1] VOLT	3328	3329							
CELL [2] VOLT	3332	3332							
CELL [3] VOLT	3331	3331							
CELL [4] VOLT	3331	3331							
CELL [5] VOLT	3331	3331							
CELL [6] VOLT	3332	3332							
CELL [7] VOLT	3331	3331							
CELL [8] VOLT	3331	3331							
CELL [9] VOLT	3331	3331							
CELL [10] VOLT	3330	3330							
CELL [11] VOLT	3333	3333							
CELL [12] VOLT	3332	3332							
CELL [13] VOLT	3333	3333							
CELL [14] VOLT	3332	3332							
CELL [15] VOLT	3331	3331							
CELL [16] VOLT	3326	3326							
CURRENT	0	0							
CELL [1] TEMP.	27	27							
CELL [2] TEMP.	27	27							
CELL [3] TEMP.	27	27							
CELL [4] TEMP.	27	27							
CELL [5] TEMP.	25	25							
CELL [6] TEMP.	0	0							

The BYD logo is visible in the bottom left corner, and the text "Copyright(C)" is in the bottom right corner.

10. Read the history. (Click the **History Alarm** & **Get all Records**)



11. Read success

BYD BMS Software V1.0.7

Close PortLogoutModuleLoad DataSave DataExit

Hint:Query SBS data... Succeed!

Current Version: BMSModule Address: 0

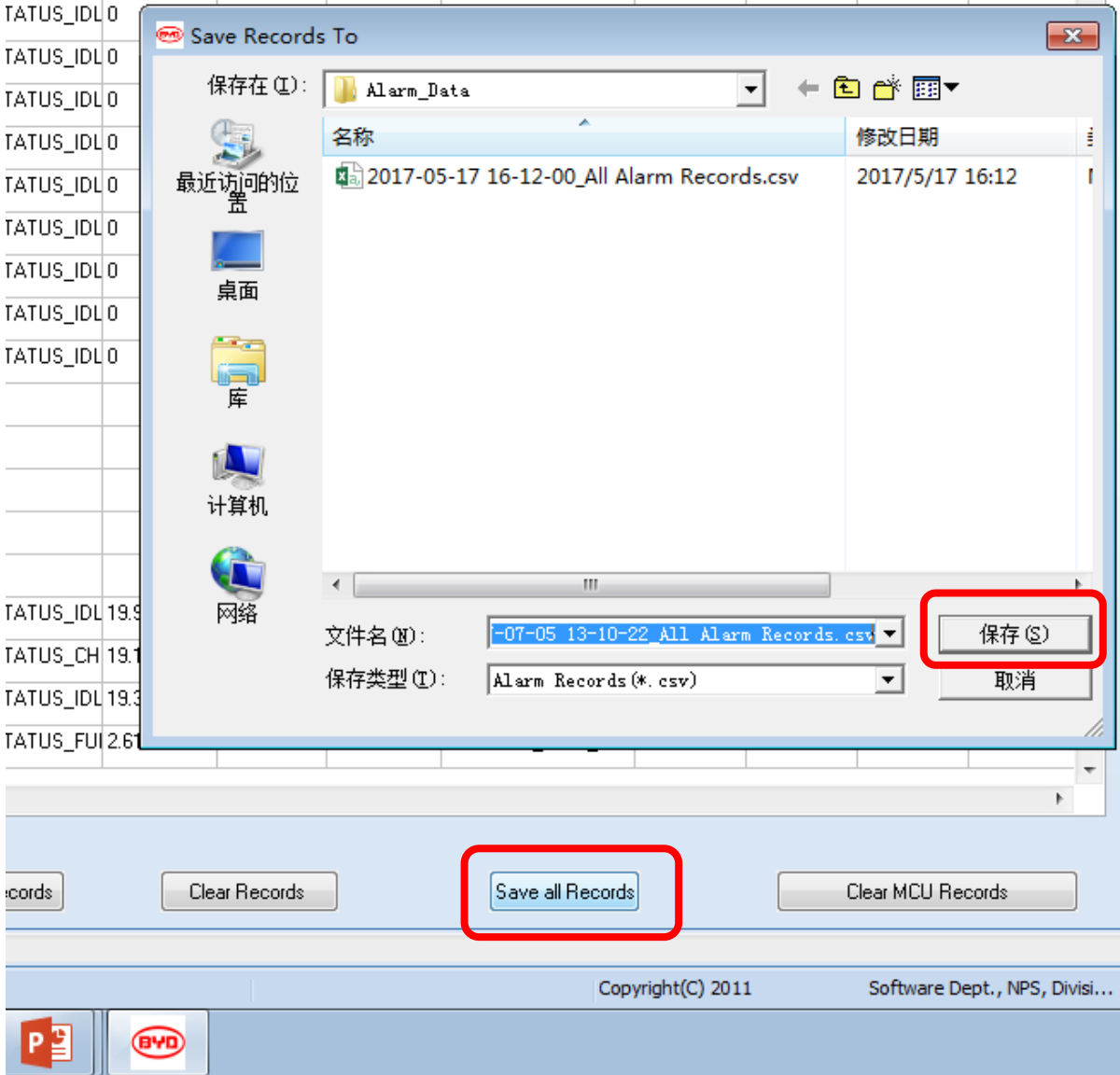
File Option(E)Port Setting(S)Version Exchange(E)About Project(A)

TSBS QueryAuto QueryHistory AlarmSystem Monitor

Num	Start Time	End Time	Mode	Current	Voltage	Capacity	Alarm	Ambient Temp	Batt Temp.1	Batt Temp.2	Batt Temp.3
147	2017-6-18 20:4:35	2017-6-18 20:5:35	STATUS_IDL 0		47.619	0.5	PROTECT_CELL_UV	24	27	27	27
148	2017-6-12 16:14:14	2017-6-18 20:5:35	STATUS_IDL 0		47.619	0	ShutDown	24	27	27	27
149	2017-6-29 10:40:17	2017-6-29 10:40:17	STATUS_IDL 0		47.895	0.5	PowerON	21	26	26	26
150	2017-6-29 12:23:40	2017-6-29 12:24:40	STATUS_IDL 0		47.689	0.5	PROTECT_CELL_UV	24	26	26	26
151	2017-6-29 10:40:15	2017-6-29 12:24:40	STATUS_IDL 0		47.687	0	ShutDown	24	26	26	26
152	2017-7-1 13:12:24	2017-7-1 13:12:24	STATUS_IDL 0		47.746	0.5	PowerON	22	27	27	27
153	2017-7-1 13:17:39	2017-7-1 13:18:39	STATUS_IDL 0		47.733	0.5	PROTECT_CELL_UV	23	27	27	27
154	2017-7-1 13:12:22	2017-7-1 13:18:39	STATUS_IDL 0		47.734	0	ShutDown	23	27	27	27
155	2017-7-3 10:18:46	2017-7-3 10:18:46	STATUS_IDL 0		47.744	0.5	PowerON	22	26	26	26
161	2017-7-3 10:26:42	2017-7-3 10:26:42	STATUS_IDL 19.973		48.379	0.5	PowerON	22	26	26	26
162	2017-7-3 10:26:40	2017-7-3 10:41:5	STATUS_CH 19.193		52.672	5	ShutDown	23	27	26	26
163	2017-7-3 10:42:27	2017-7-3 10:42:27	STATUS_IDL 19.347		52.376	5	PowerON	23	27	26	26
164	2017-7-3 13:4:0	2017-7-3 13:4:1	STATUS_FUL 2.617		58.354	50	PROTECT_CELL_OV	28	32	33	33

BYD BMS Software V1.0.7Get Alarm Records Success!OK

12. Save the records



13. Get software Version.

BYD BMS Software V1.0.7

Close Port

Logout

Module

Load Data

Save Data

Exit

Hint:

File Option(E)Port Setting(S)Version Exchange(E)About Project(A)

TSBS Query

Auto Query

History Alarm

System Monitor

VERSION INFORMATION

MAIN VERSION	HYP-VERSION	EDIT VERSION	EDIT TIME
4	4	4	2017.05.31
HARDWARE VERSION	FUNCTION VERSION		
3U-BMS-V2	Q-S16C050-LR-B		

Get Software Version